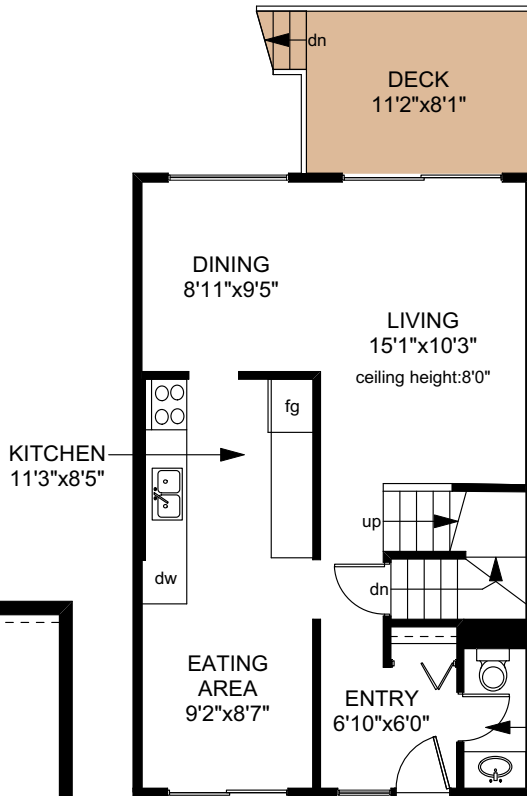
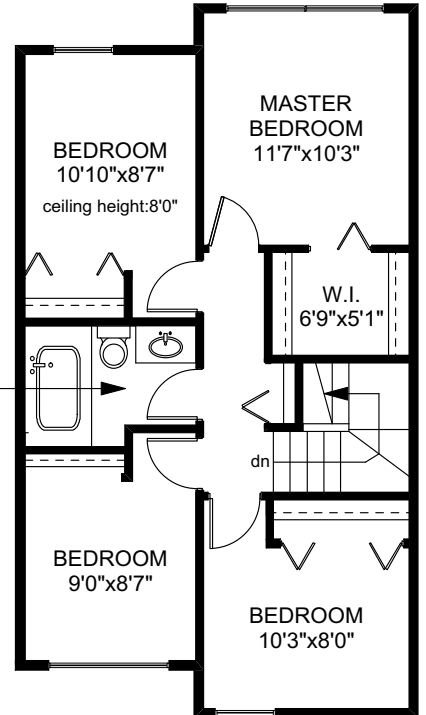

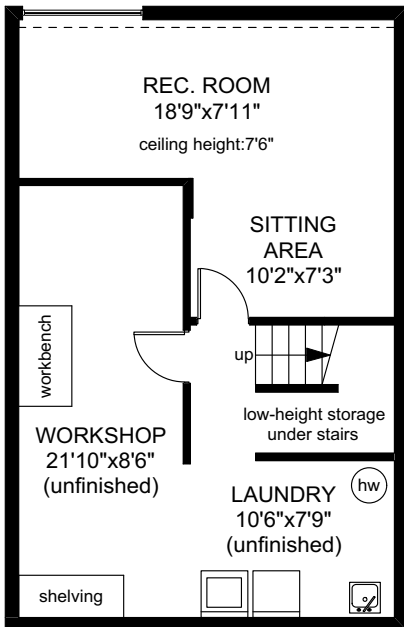


563 CARNATION PLACE

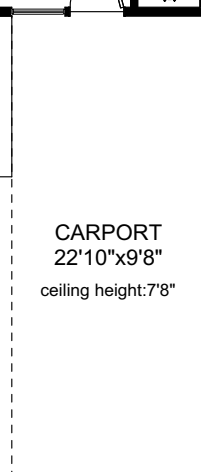
 UPPER FLOOR
655 SQ.FT



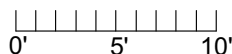
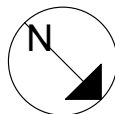
 MAIN FLOOR
607 SQ.FT



 LOWER FLOOR
607 SQ.FT



| | FINISHED SQ. FT. | UNFINISHED SQ. FT. | TOTAL SQ. FT. |
|--------------|------------------|--------------------|---------------|
| MAIN | 607 | 0 | 607 |
| UPPER | 655 | 0 | 655 |
| LOWER | 238 | 369 | 607 |
| TOTAL | 1500 | 369 | 1869 |
| DECK | 0 | 90 | 90 |
| PATIO | 0 | 64 | 64 |
| CARPORT | 0 | 221 | 221 |



PREPARED FOR THE EXCLUSIVE USE OF
PHILIP ILLINGWORTH OF DFH REAL ESTATE

MEASURED ON: 06/05/18
DRAWING FILE: 17190

Tafe Measure VICTORIA, B.C.
Ph. 883.8894
www.tafemeasure.com