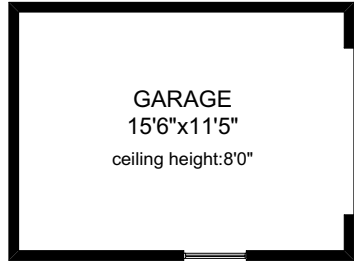
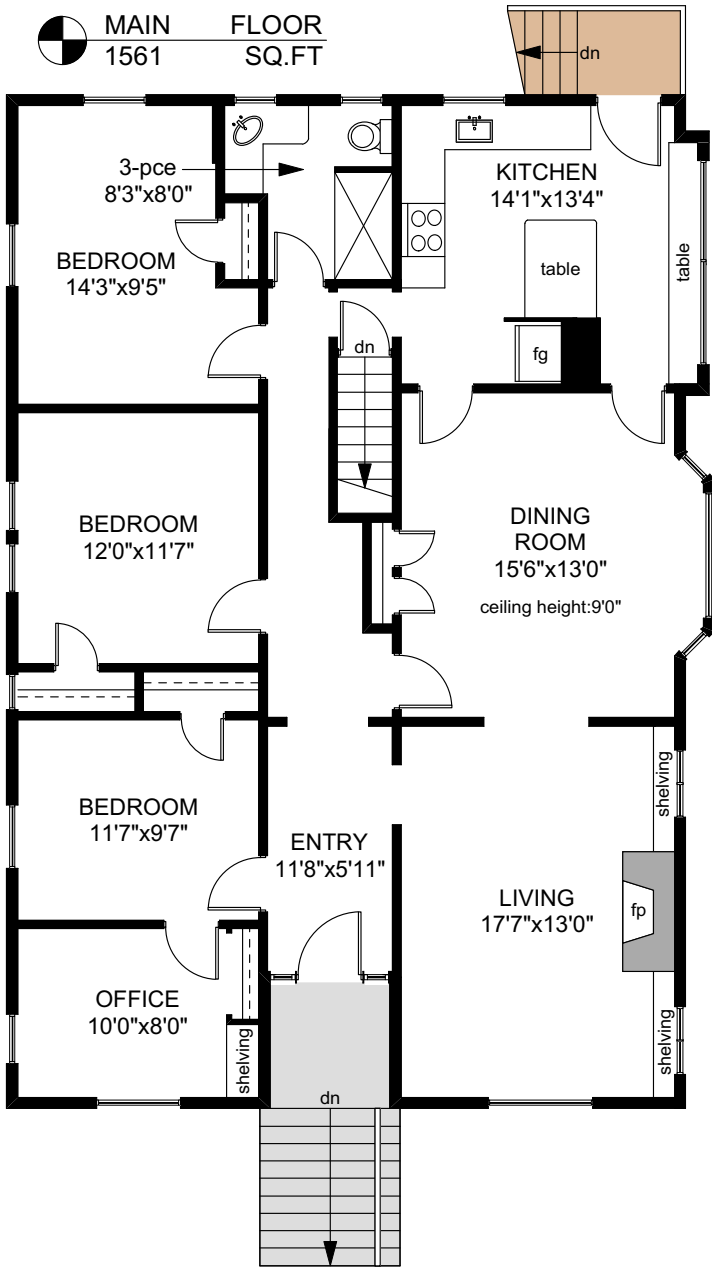
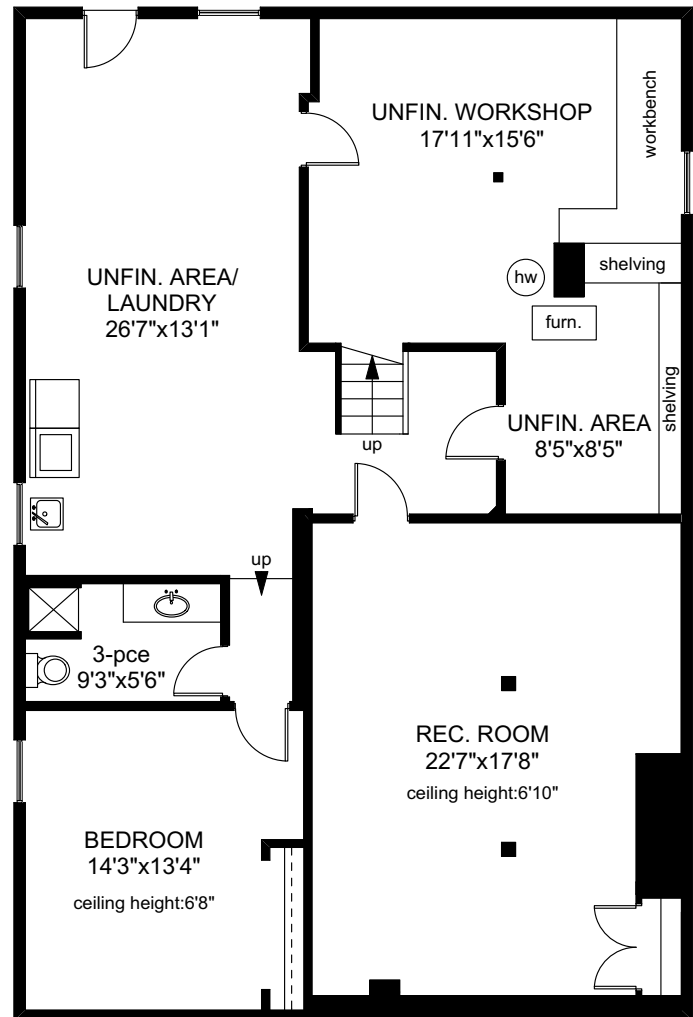


2267 WINDSOR ROAD

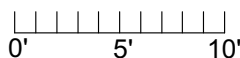
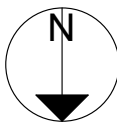
MAIN FLOOR
1561 SQ.FT



LOWER FLOOR
1570 SQ.FT



	FINISHED SQ. FT.	UNFINISHED SQ. FT.	TOTAL SQ. FT.
MAIN	1561	0	1561
LOWER	715	855	1570
TOTAL	2276	855	3131
GARAGE	0	203	203



PREPARED FOR THE EXCLUSIVE USE OF
PHILIP ILLINGWORTH OF DFH REALTY

MEASURED ON: 04/13/17
DRAWING FILE: 13838

Tafmeasure VICTORIA, B.C.
Ph. 883.8894
www.tafmeasure.com