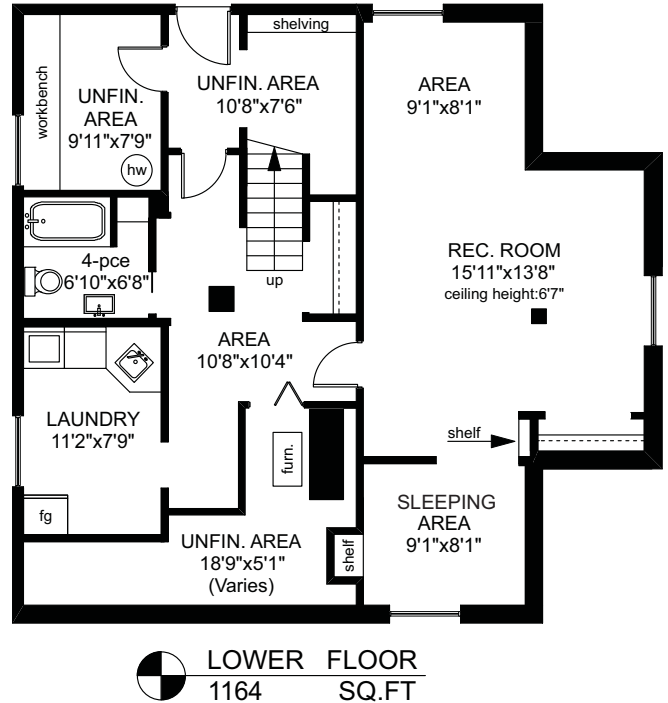
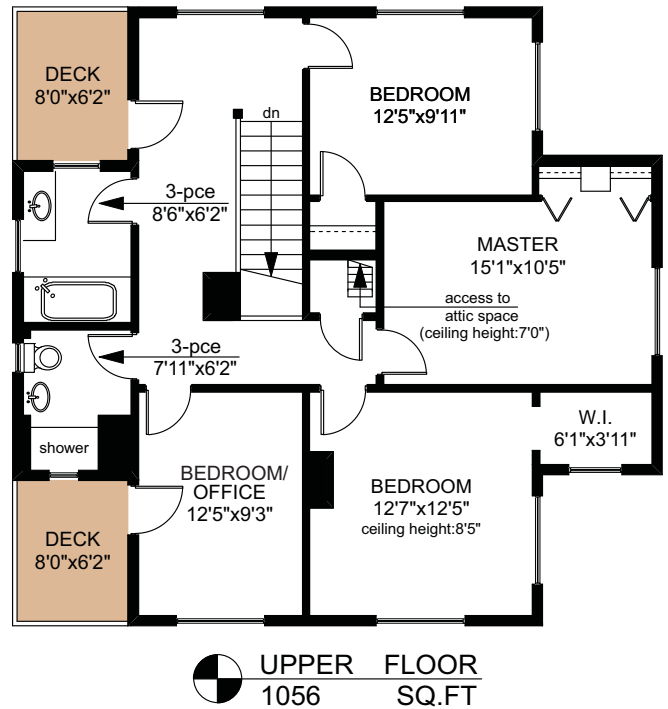
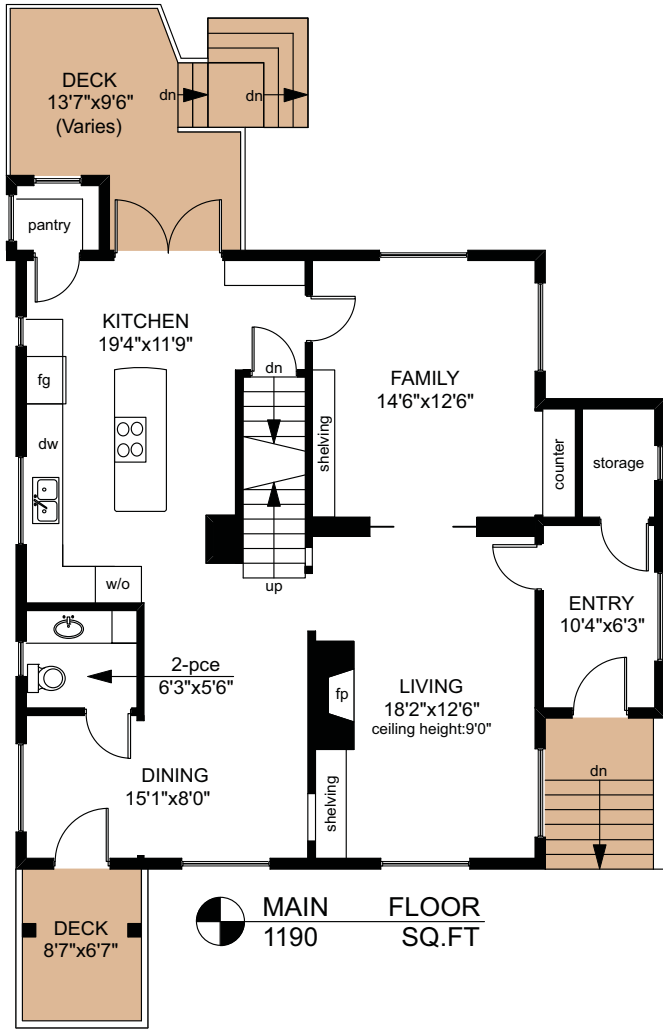
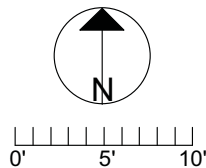


1014 ST. PATRICK STREET



	FINISHED SQ. FT.	UNFINISHED SQ. FT.	TOTAL SQ. FT.
MAIN	1190	0	1190
UPPER	1056	0	1056
LOWER	827	337	1164
TOTAL	3073	337	3410
DECKS	0	287	287



PREPARED FOR THE EXCLUSIVE USE OF
PHILIP ILLINGWORTH OF DFH REAL ESTATE

MEASURED ON: 04/01/16
DRAWING FILE: 13498

Tafe Measure VICTORIA, B.C.
Ph. 883.8894
www.tafemeasure.com