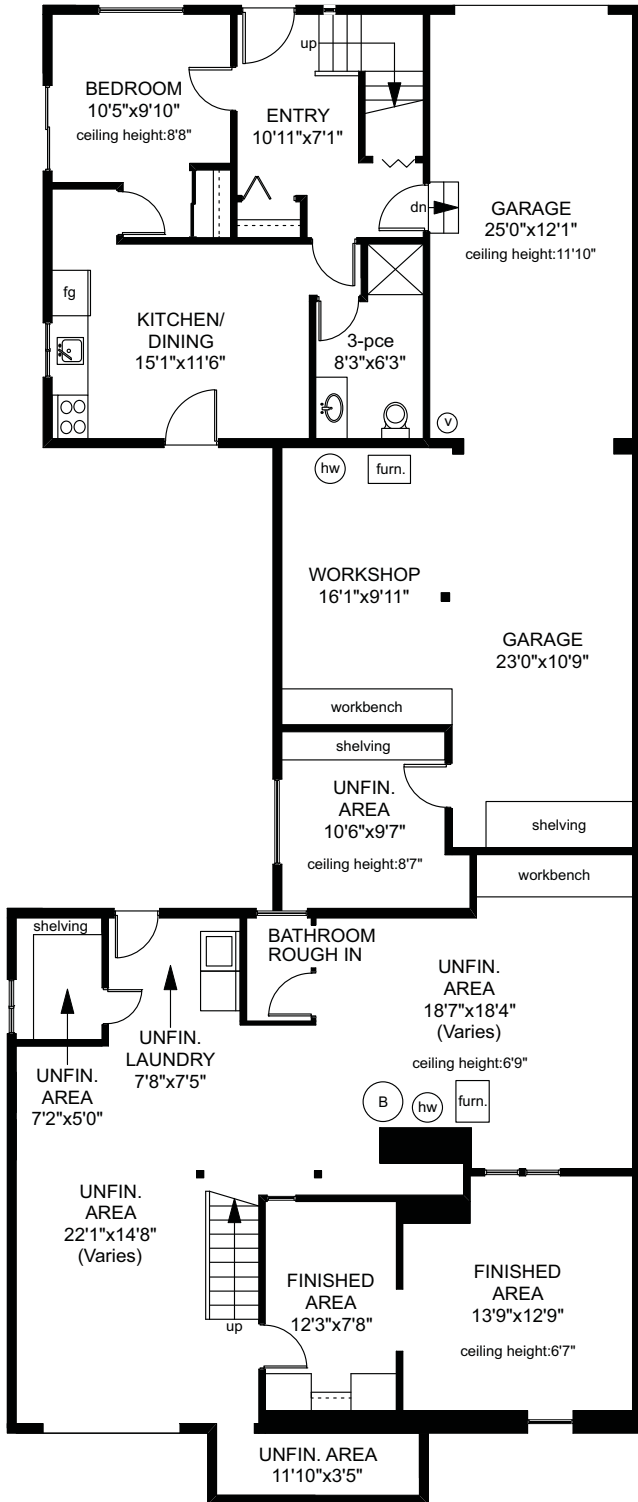


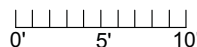
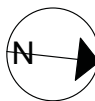
# 184/186 SAINT CHARLES STREET

186 LOWER FLOOR  
580 SQ.FT

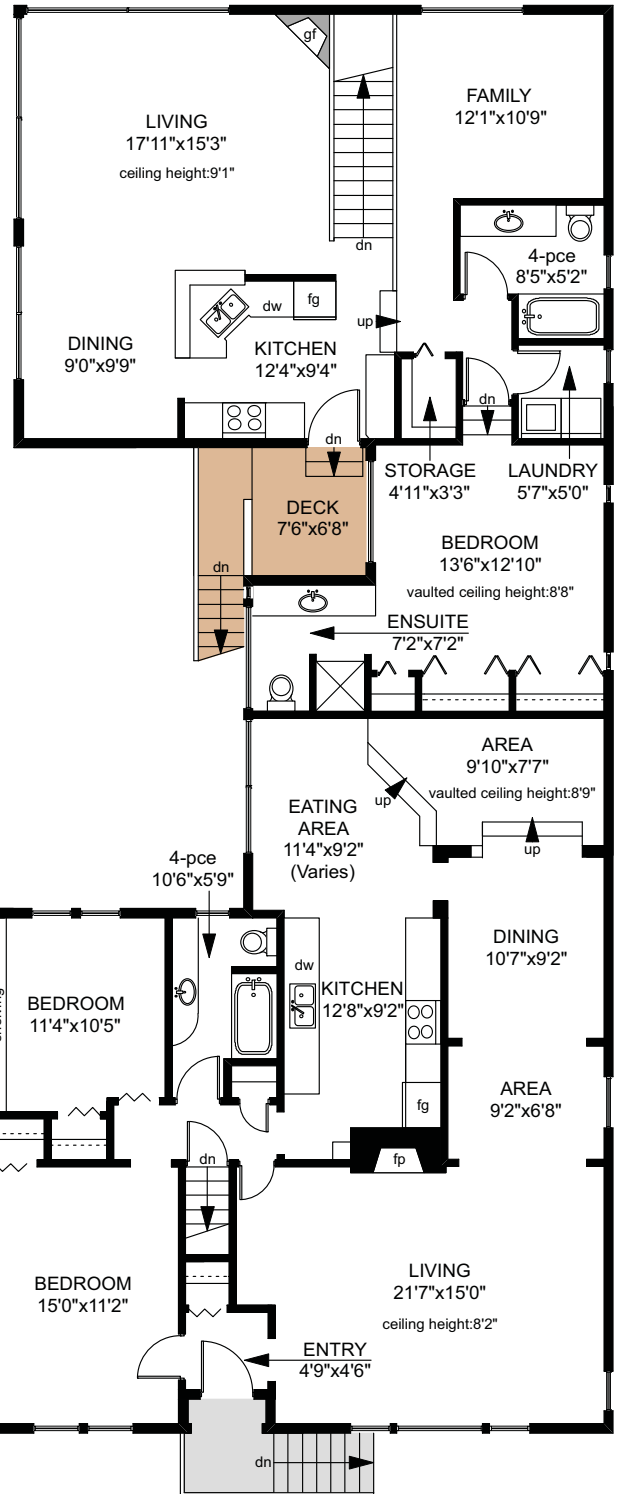


184 LOWER FLOOR  
1220 SQ.FT

	FINISHED SQ. FT.	UNFINISHED SQ. FT.	TOTAL SQ. FT.
MAIN	2575	0	2575
LOWER	895	905	1800
TOTAL	3470	905	4375
GARAGE	0	884	884
DECK	0	50	50



186 MAIN FLOOR  
1195 SQ.FT



184 MAIN FLOOR  
1380 SQ.FT

PREPARED FOR THE EXCLUSIVE USE OF  
PHILIP ILLINGWORTH OF DFH REAL ESTATE

MEASURED ON: 07/05/16  
DRAWING FILE: 13675

**Taf**measure VICTORIA, B.C.  
Ph. 883.8894  
www.tafmeasure.com