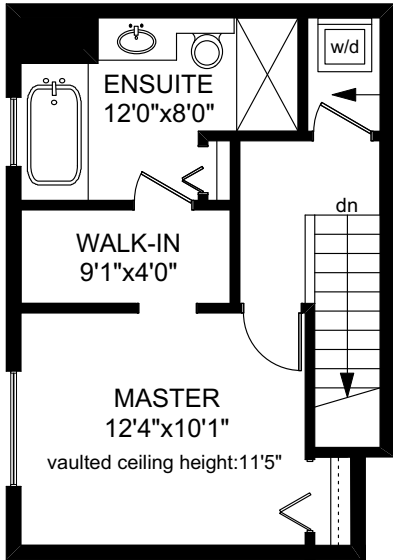
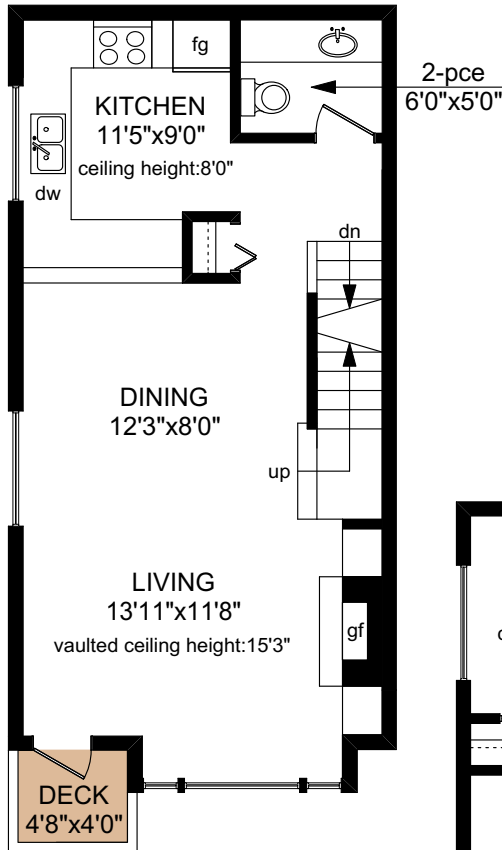


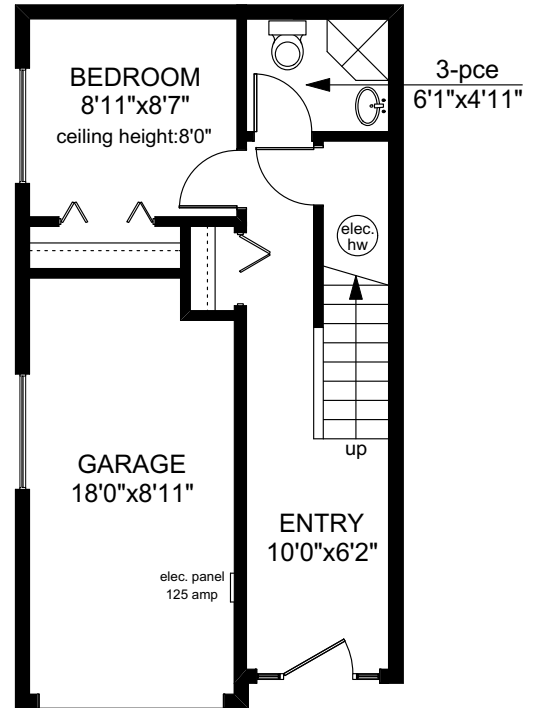
# 1 - 356 SIMCOE STREET



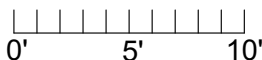
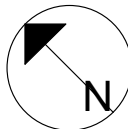
UPPER FLOOR  
377 SQ.FT



MAIN FLOOR  
496 SQ.FT



LOWER FLOOR  
302 SQ.FT



	FINISHED SQ. FT.	UNFINISHED SQ. FT.	TOTAL SQ. FT.
MAIN	496	0	496
UPPER	377	0	377
LOWER	302	0	302
TOTAL	1175	0	1175
GARAGE	0	172	172
DECK	0	22	22

PREPARED FOR THE EXCLUSIVE USE OF  
PHILIP ILLINGWORTH OF DFH REAL ESTATE

MEASURED ON: 12/20/17  
DRAWING FILE: 14514

**Tafe Measure** VICTORIA, B.C.  
Ph. 883.8894  
www.tafemeasure.com