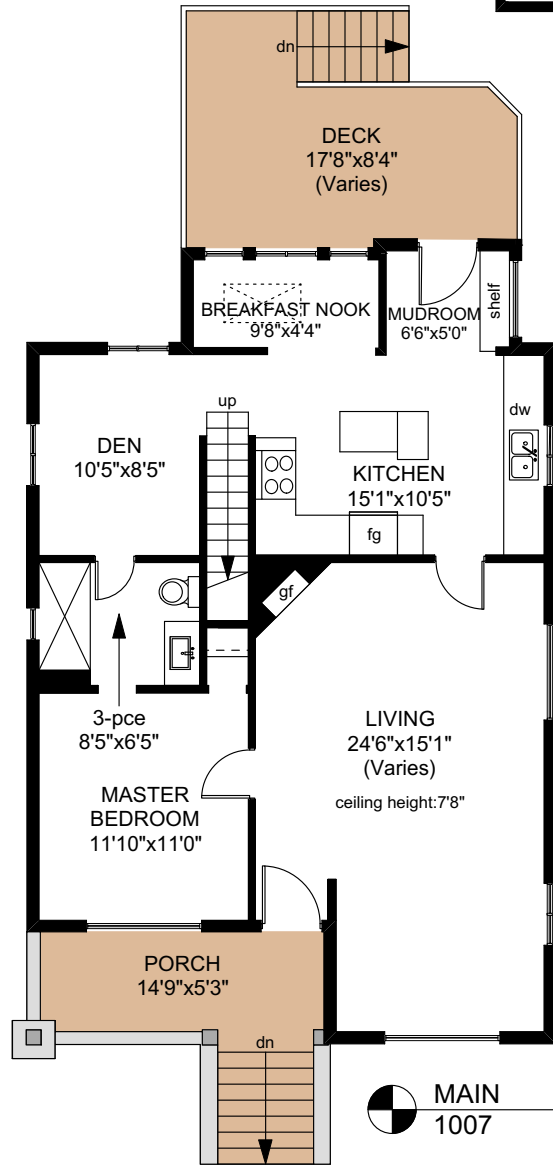
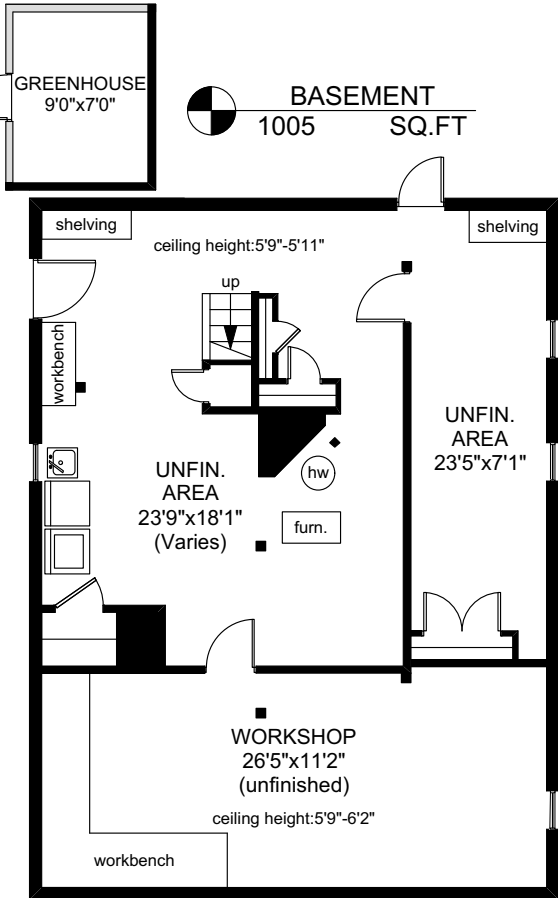
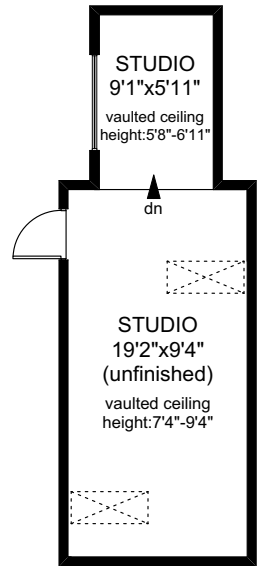
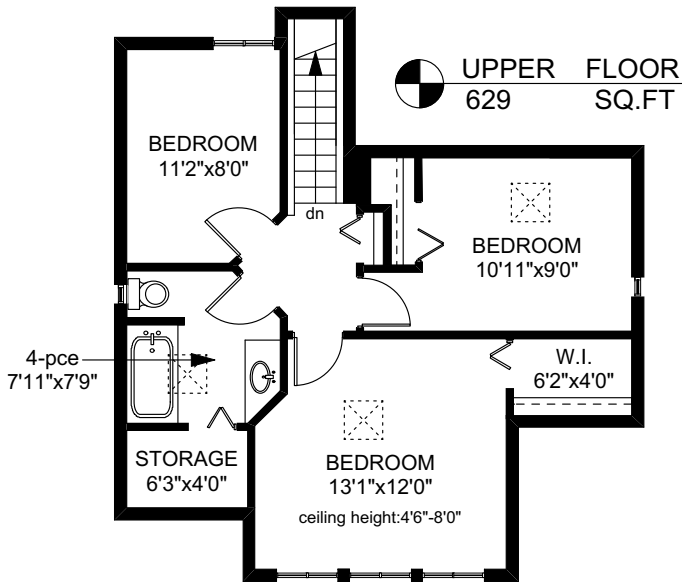
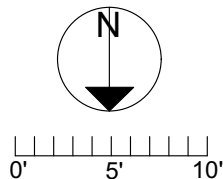


1631 PINewood AVENUE



	FINISHED SQ. FT.	UNFINISHED SQ. FT.	TOTAL SQ. FT.
MAIN	1007	0	1007
UPPER	629	0	629
TOTAL	1636	0	1636
BASEMENT	0	1005	1005
STUDIO	0	270	270
GREENHOUSE	0	75	75
DECK	0	163	163
PORCH	0	81	81



PREPARED FOR THE EXCLUSIVE USE OF
PHILIP ILLINGWORTH OF DFH REAL ESTATE

MEASURED ON: 08/15/17
DRAWING FILE: 13955

Tafe Measure VICTORIA, B.C.
Ph. 883.8894
www.tafemeasure.com