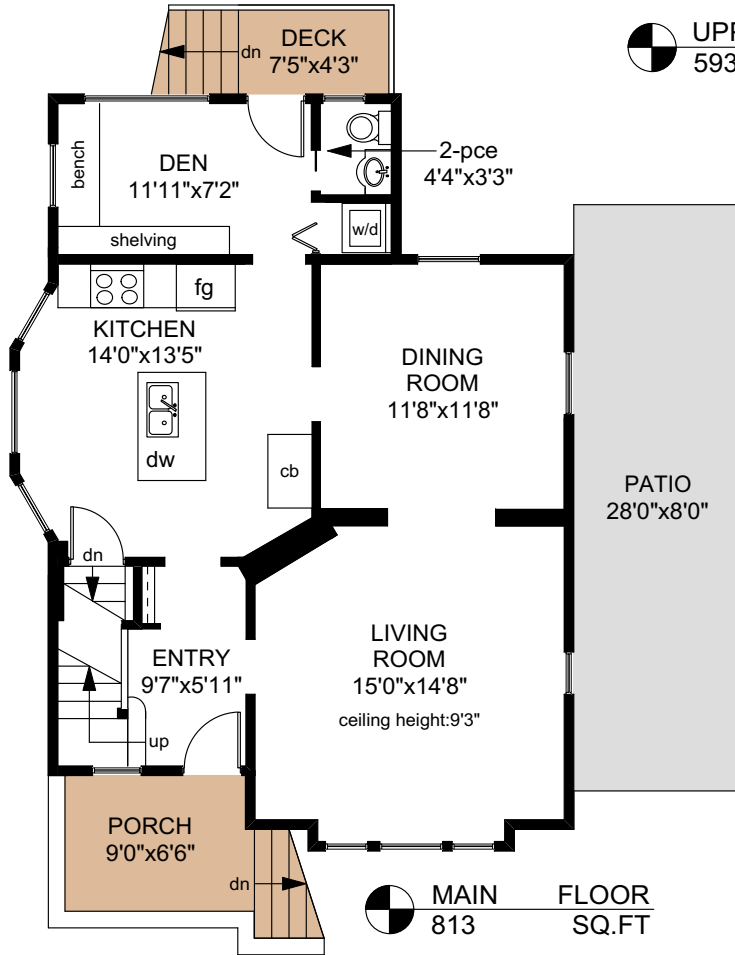
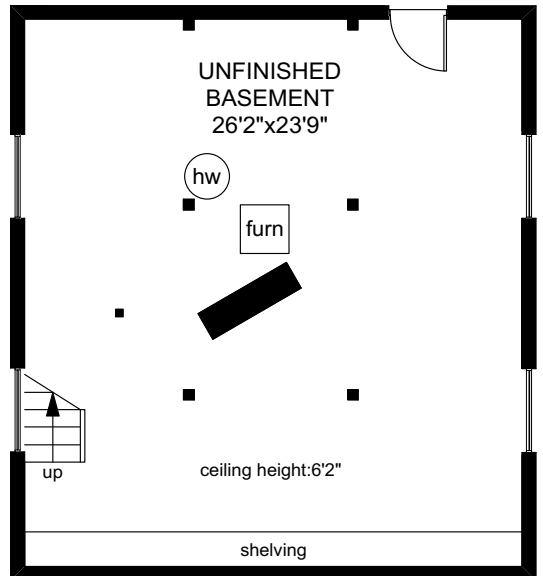
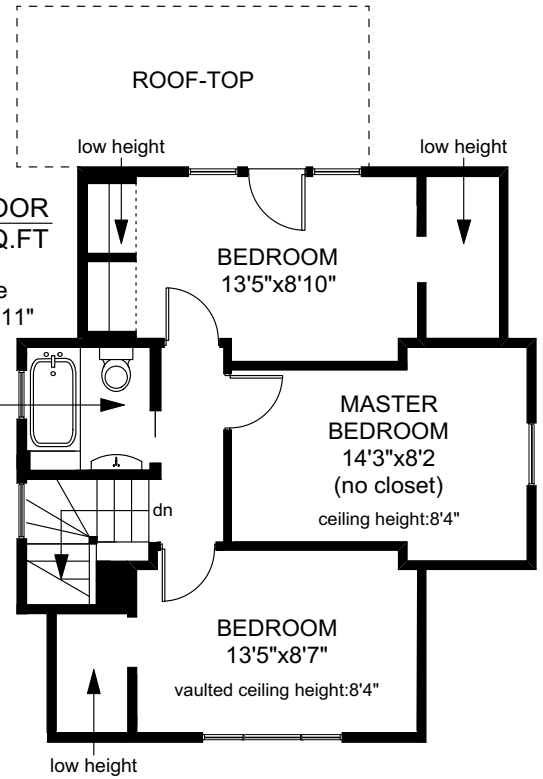


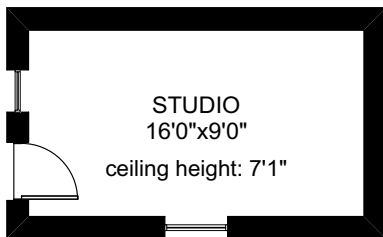
59 MOSS STREET



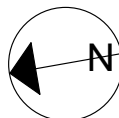
UPPER FLOOR
593 SQ.FT



LOWER FLOOR
684 SQ.FT



	FINISHED SQ. FT.	UNFINISHED SQ. FT.	TOTAL SQ. FT.
MAIN	813	0	813
UPPER	593	0	593
LOWER	0	684	684
TOTAL	1406	684	2090
PORCH	0	58	58
STUDIO	199	0	199
PATIO	0	224	224
DECK	0	32	32



PREPARED FOR THE EXCLUSIVE USE OF
PHILIP ILLINGWORTH OF DFH REAL ESTATE

MEASURED ON: 06/14/18
DRAWING FILE: 17182

Tafmeasure VICTORIA, B.C.
Ph. 883.8894
www.tafmeasure.com