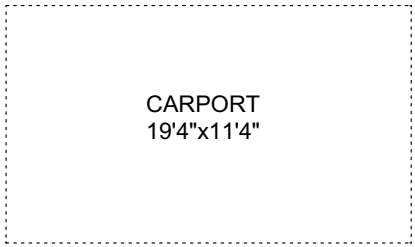
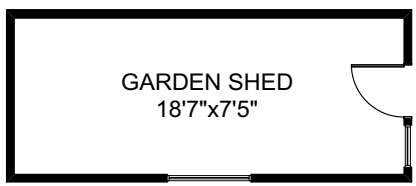
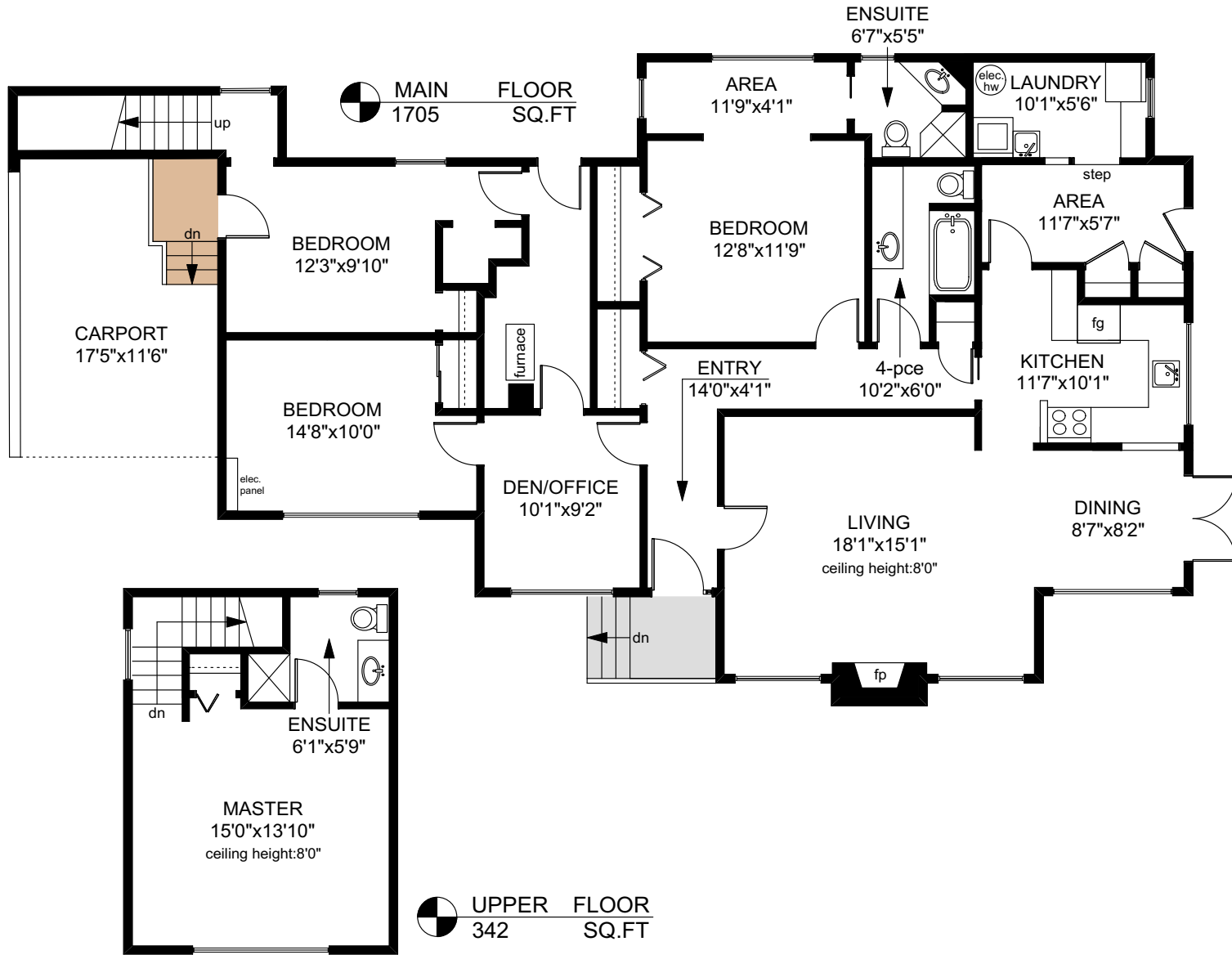
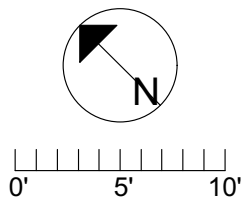


2620 MACDONALD DRIVE EAST



	FINISHED SQ. FT.	UNFINISHED SQ. FT.	TOTAL SQ. FT.
MAIN	1705	0	1705
UPPER	342	0	342
TOTAL	2047	0	2047
CARPORTS	0	394	394
GREENHOUSE	0	52	52
SHED	0	159	159



PREPARED FOR THE EXCLUSIVE USE OF
PHIL ILLINGWORTH OF DFH REAL ESTATE

MEASURED ON: 07/09/18
DRAWING FILE: 15727

Tafe Measure VICTORIA, B.C.
Ph. 883.8894
www.tafemeasure.com