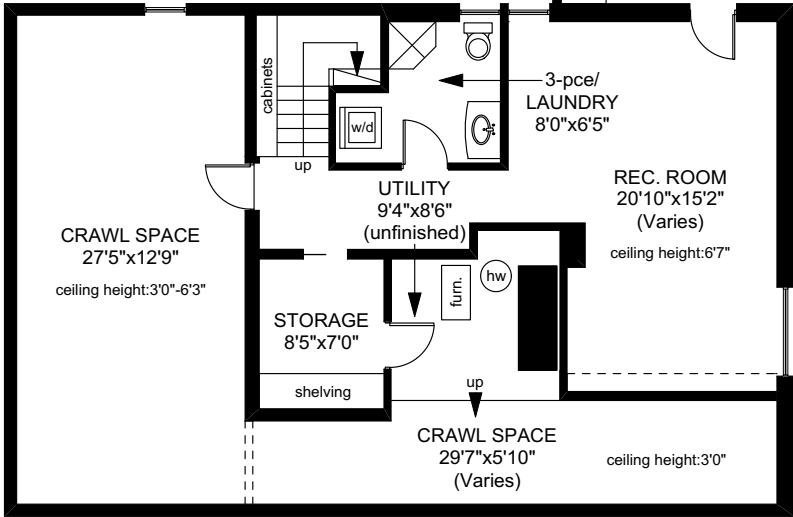
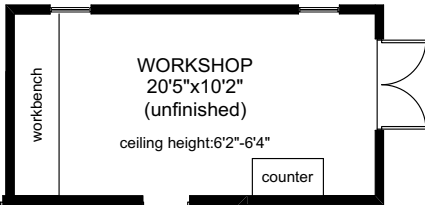
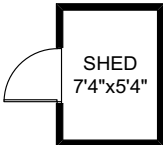
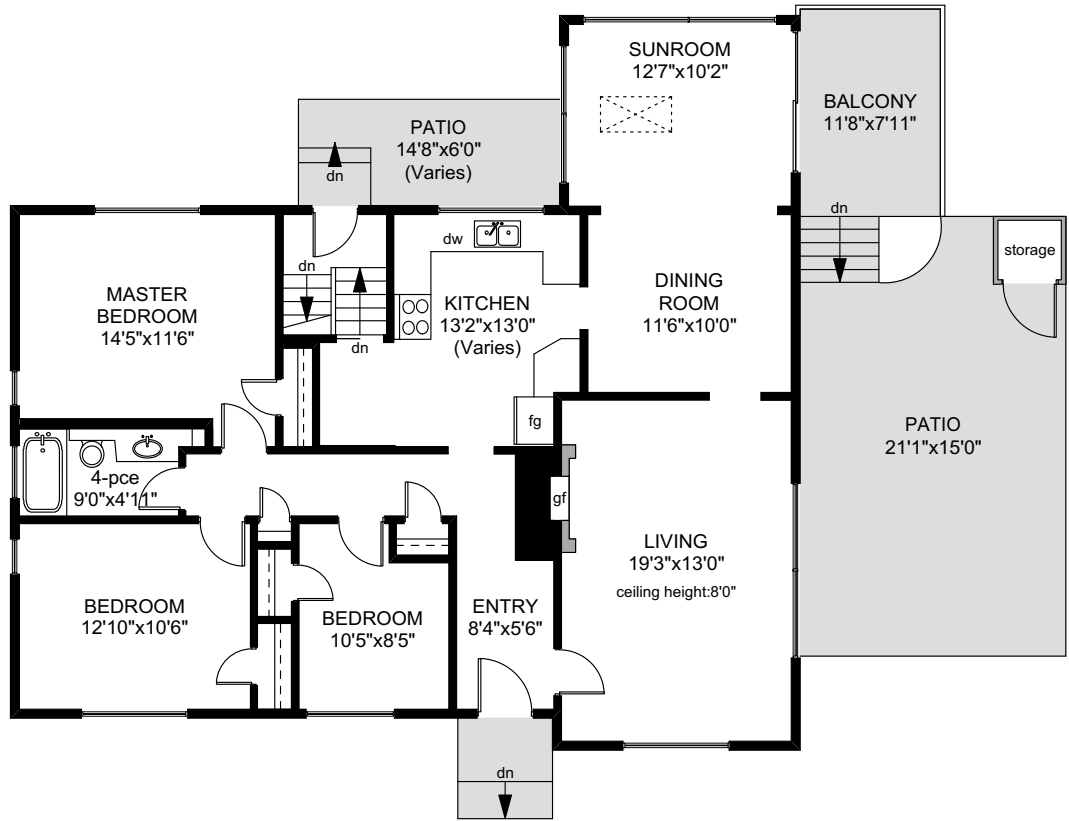


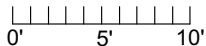
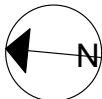
4013 BOW ROAD

MAIN FLOOR
1460 SQ.FT



LOWER FLOOR
922 SQ.FT

	FINISHED SQ. FT.	UNFINISHED SQ. FT.	TOTAL SQ. FT.
MAIN	1460	0	1460
LOWER	592	330	922
TOTAL	2052	330	2382
CRAWL SPACE	0	600	600
SHED	0	49	49
BALCONY	0	92	92
PATIOS	0	535	535



PREPARED FOR THE EXCLUSIVE USE OF
PHILIP ILLINGWORTH OF DFH REAL ESTATE

MEASURED ON: 07/18/17
DRAWING FILE: 13936

Tafe Measure VICTORIA, B.C.
Ph. 883.8894
www.tafemeasure.com