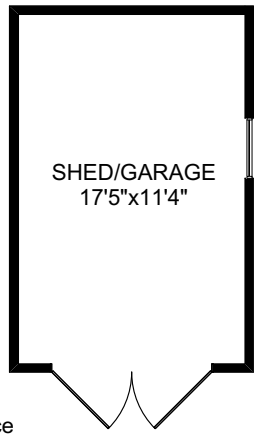
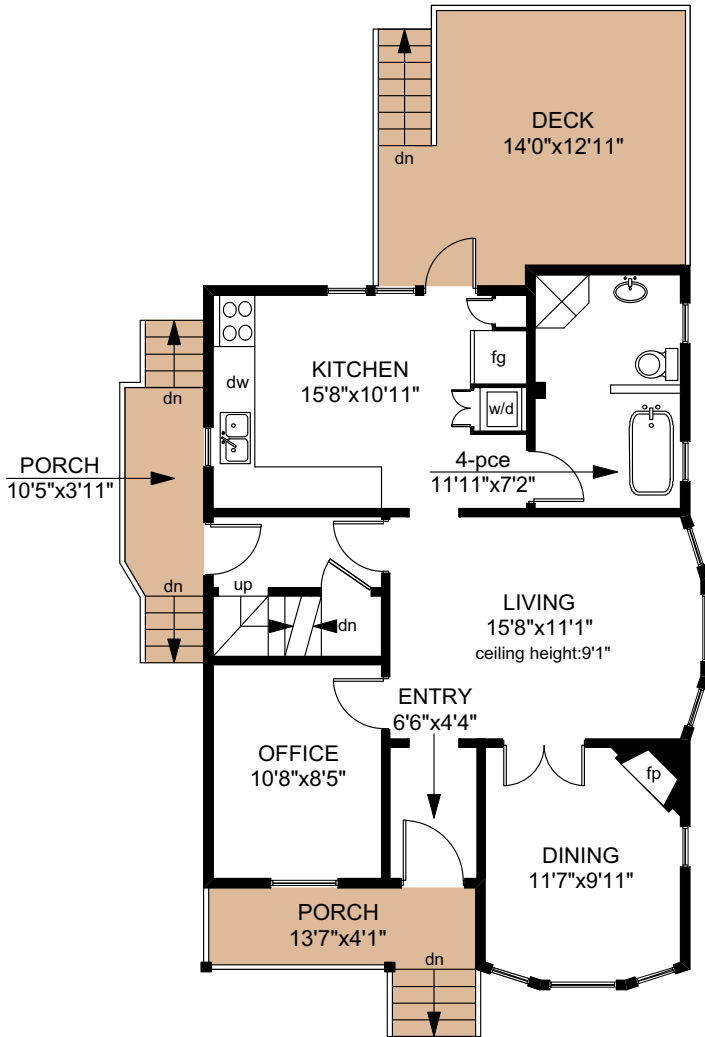
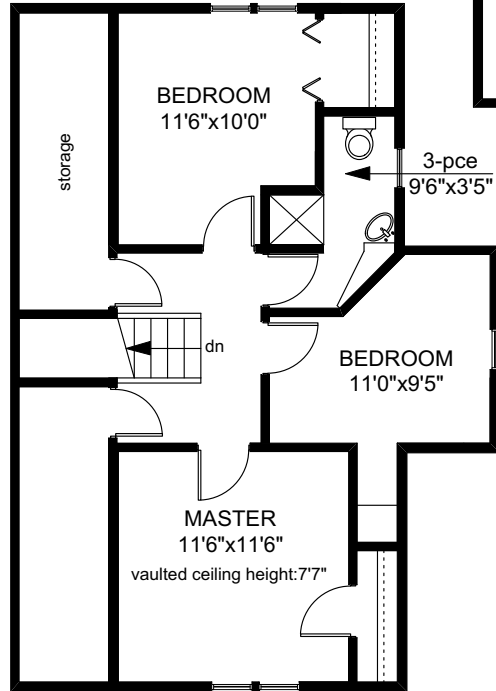


2739 AVEBURY AVENUE

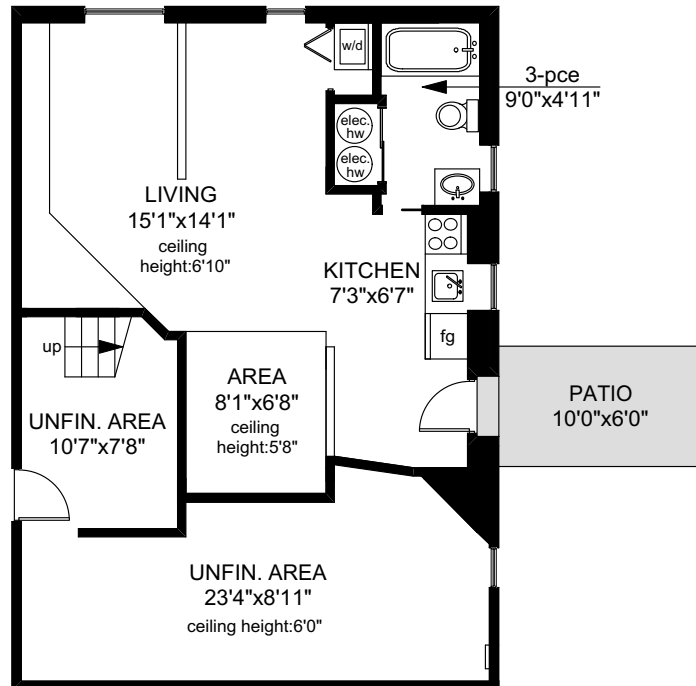


UPPER FLOOR
557 SQ.FT

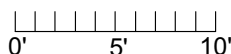
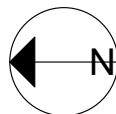


MAIN FLOOR
798 SQ.FT

LOWER FLOOR
829 SQ.FT



	FINISHED SQ. FT.	UNFINISHED SQ. FT.	TOTAL SQ. FT.
MAIN	798	0	798
UPPER	557	0	557
LOWER	507	322	829
TOTAL	1862	322	2184
DECK	0	191	191
SHED/GARAGE	0	222	222



PREPARED FOR THE EXCLUSIVE USE OF
PHIL ILLINGWORTH OF DFH REAL ESTATE

MEASURED ON: 03/30/16
DRAWING FILE: 13487

Tafe Measure VICTORIA, B.C.
Ph. 883.8894
www.tafemeasure.com